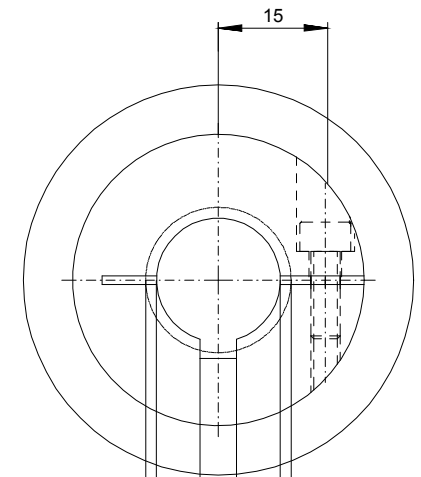
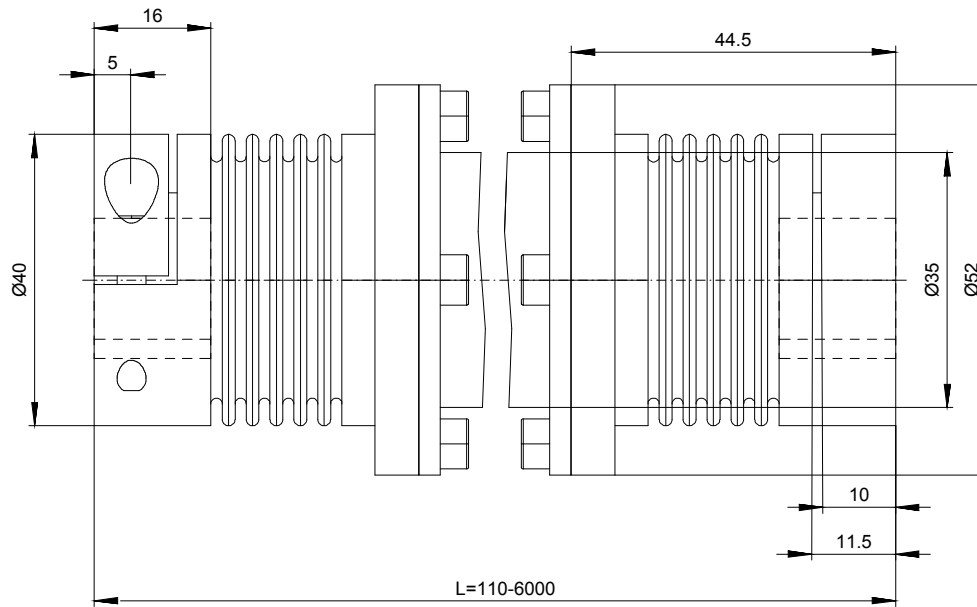


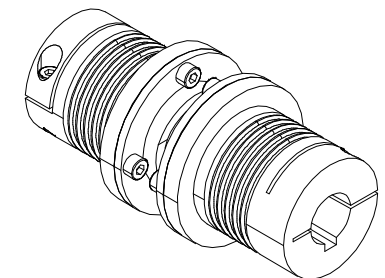
DIN or ANSI keyway available

- Ø17 H7 max w/ keyway
- Ø11/16" H7 max w/ keyway
- Ø20 H7 max w/o keyway
- Ø3/4" H7 max w/o keyway



DIN or ANSI keyway available

- Ø17 H7 max w/ keyway
- Ø11/16" H7 max w/ keyway
- Ø20 H7 max w/o keyway
- Ø3/4" H7 max w/o keyway



We reserve the right to make dimensional and design changes

Rated torque : 10 Nm
 Screw ISO 4762 : M4
 Tightening torque : 5 Nm



Description:		Line Shaft With Clamping Hub			Size, Series:		LB/10/L/#-(KW)/#-(KW)	
General tolerances:	Scale:	Date	Name					
DIN/ISO 2768-1m	1:1	Drawn:						
Surface quality:	Checked:							
DIN/ISO 1302						Index	Change	Date Name