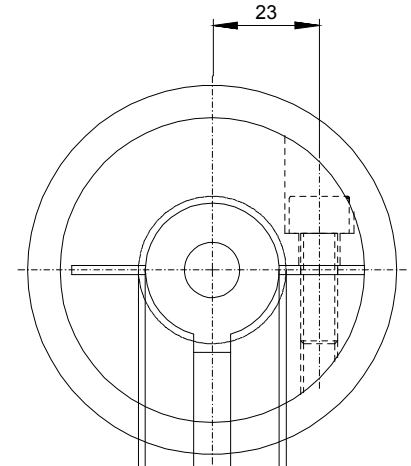
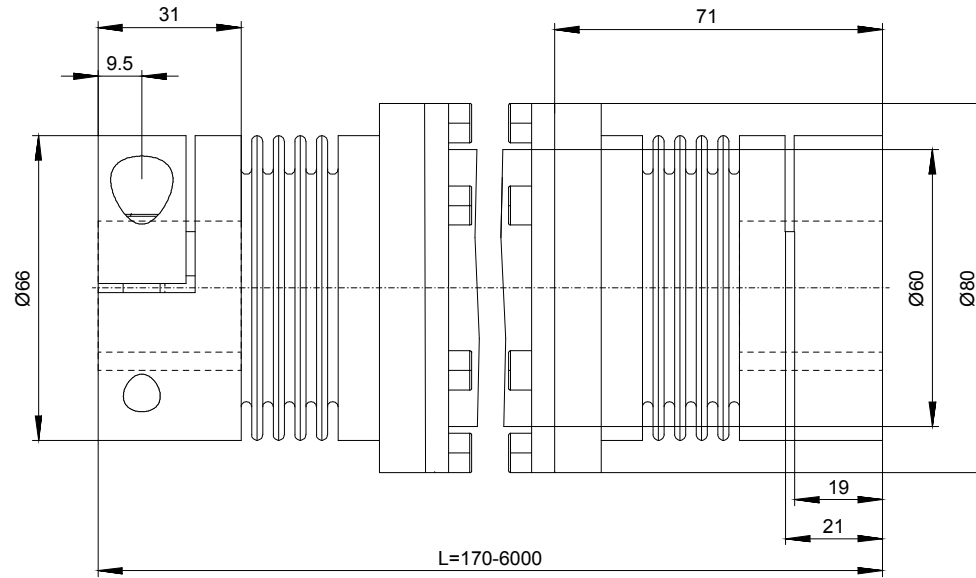


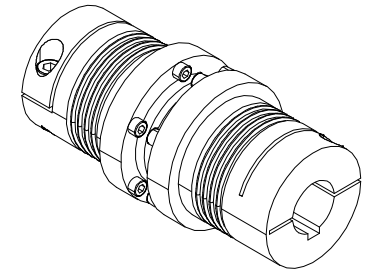
DIN or ANSI keyway available

- Ø29 H7 max w/ keyway
- Ø15/16" H7 max w/ keyway
- Ø32 H7 max w/o keyway
- Ø1 1/4" H7 max w/o keyway



DIN or ANSI keyway available

- Ø29 H7 max w/ keyway
- Ø15/16" H7 max w/ keyway
- Ø32 H7 max w/o keyway
- Ø1 1/4" H7 max w/o keyway



We reserve the right to make dimensional and design changes

Rated torque : 60 Nm  
 Screw ISO 4762 : M8  
 Tightening torque : 40 Nm



Description: <b>Line Shaft With Clamping Hub</b>		Size, Series: LB/60/L/#-(KW)/#-(KW)	
General tolerances: DIN/ISO 2768-1m	Scale: <b>1:1</b>	Date	Name
Surface quality: DIN/ISO 1302	Checked:	Drawn:	
		Index	Change
		Date	Name